

# **1995 Boys' Sweet Sixteen Action**

*first round*

**PLEASURE RIDGE PARK**

**VS.**

**MC NAPIER**

**March 16, 1995**

**Rupp Arena  
Lexington, Kentucky**

**OFFICIAL STATISTICS BOOKLET**

OFFICIAL NFSHS BASKETBALL BOX SCORE: \*\*\* FINAL \*\*\*  
 Date: 03-16-95 Site: BOY'S SWEET 16, LEXINGTON

VISITORS (Last Name, First)

NO.	M.C. NAPIER	Tot		3-POINT		FT	FTA	Rebounds			PF	TP	A	TO	BLK	S	TIME	
		FG	FGA	FG	FGA			OFF	DEF	TOT								
35	THOMPSON, BRAN.	1	3	0	0	0	1	0	3	3	2	2	1	2	0	1	14:27	
41	NEACE, THOMAS	4	5	0	0	2	4	1	5	6	5	10	1	9	0	1	29:36	
45	RITCHIE, MIKE	3	7	0	0	7	8	3	3	6	4	13	1	2	3	1	27:55	
23	SUMNER, BILL	4	7	1	3	0	0	0	1	1	0	9	0	0	0	0	17:27	
25	HURLEY, JAMES	1	6	1	5	2	4	0	4	4	4	5	0	4	0	2	30:39	
13	COLLINS, GARY	3	5	3	5	1	2	0	1	1	1	10	1	2	0	0	18:52	
53	FELTNER, DAVID	1	1	0	0	0	0	0	0	0	2	2	0	0	0	0	4:05	
33	RICE, JON	1	2	0	0	2	2	0	3	3	2	4	1	3	0	1	15:38	
21	WELLS, ROY	0	0	0	0	0	0	0	0	0	1	0	0	0	0	0	1:21	
TEAM REBOUNDS (INCLUDED IN TOTALS)																		
TOTALS		18	36	5	13	14	21	4	20	24	21	55	5	22	3	6	160	

Percentages: Game FG 18/36 50.0% 3-PT. 5/13 38.5% FT 14/21 66.7%

Period 1	4/11	36.4%	1/4	25.0%	2/4	50.0%
Period 2	5/9	55.6%	3/4	75.0%	1/2	50.0%
Period 3	5/9	55.6%	1/4	25.0%	3/5	60.0%
Period 4	4/7	57.1%	0/1	0.0%	8/10	80.0%

HOME (Last Name, First)

NO.	PLEASURE RIDGE PARK	Tot		3-POINT		FT	FTA	Rebounds			PF	TP	A	TO	BLK	S	TIME	
		FG	FGA	FG	FGA			OFF	DEF	TOT								
32	NELSON, GILWAN	3	8	0	2	7	8	5	3	8	1	13	3	4	0	0	28:47	
43	HOOVER, SHAWN	3	5	0	0	0	0	3	1	4	2	6	0	1	1	0	22:14	
42	LOCKHART, MIKE	3	10	0	0	0	4	5	4	9	1	6	0	2	2	3	26:19	
15	TAYLOR, CHARLES	4	9	0	3	2	5	2	1	3	5	10	2	5	0	4	23:56	
23	TAYLOR, DOMINICK	3	8	0	1	4	7	3	3	6	1	10	0	1	0	2	13:29	
30	IVORY, WILLIE	3	9	1	3	2	6	3	3	6	5	9	0	2	0	2	16:07	
25	HINS, LARON	0	4	0	1	0	1	0	1	1	2	0	1	0	0	0	19:52	
34	PARIS, SHAWN	0	1	0	0	0	0	0	0	0	1	0	0	0	0	0	0:13	
21	FEY, BRANDON	2	3	0	0	0	0	1	0	1	2	4	0	1	0	1	9:03	
TEAM REBOUNDS (INCLUDED IN TOTALS)																		
TOTALS		21	57	1	10	15	31	25	19	44	20	58	6	16	3	12	160	

Percentages: Game FG 21/57 36.8% 3-PT. 1/10 10.0% FT 15/31 48.4%

Period 1	5/16	31.3%	0/4	0.0%	1/6	16.7%
Period 2	8/18	44.4%	1/4	25.0%	3/3	100.0%
Period 3	3/16	18.8%	0/2	0.0%	2/10	20.0%
Period 4	5/7	71.4%	0/0	0.0%	9/12	75.0%

OFFICIALS: Glenn Brown, Keith Hall, Anthony Gray-A.  
 Technicals: None

SCORE BY PERIODS

M.C. NAPIER	11	14	14	16	= 55
PLEASURE RIDGE PARK	11	20	8	19	= 58

Attendance: 13,565

COMMENTS: POINTS OFF TURNOVERS SECOND CHANCE POINTS

M.C. NAPIER	7	PLEASURE RIDGE PARK	25	M.C. NAPIER	7	PLEASURE RIDGE PARK	11
-------------	---	---------------------	----	-------------	---	---------------------	----

PLEASURE RIDGE PARK				Time	Score	M.C. NAPIER	M.C. NAPIER			
Player	Team	Player	Team				Player	Team	Player	Team
Nelson, Gilwan, Hoover, Shawn, Lockhart, Mike, Taylor, Charles, Taylor, Dominick Ball to PANTHERS										
1-1	100%	1-2	50.0%	1	7:37	*2-0	Layup Off Fast Break by TAYLOR, DOMINICK Assist by NELSON, GILWAN			
1		1		1	7:03	2-3*	3 pt 22 ft Right Angle Jump shot by SUMNER, BILL Assist by THOMPSON, BRAN.			
1		1		1	6:39		Foul on TAYLOR, CHARLES			
2-2	100%	2-4	50.0%	1	6:39	2-4*	HURLEY, JAMES, 2 Free Throws made 1st missed 2nd			
2		2		1	6:12	*4-4	Assist by NELSON, GILWAN			
Sub In: IVORY, WILLIE Out: NELSON, GILWAN										
1-2	50.0%	3-6	50.0%	1	5:57	4-6*	Follow Rebound by NEACE, THOMAS			
Driving Layup by TAYLOR, CHARLES										
1-2	50.0%	1-2	50.0%	1	5:47					
IVORY, WILLIE, 2 Free Throws made 1st missed 2nd										
1-2	50.0%	1-2	50.0%	1	5:16	*6-6	Foul on RITCHIE, MIKE			
Sub In: NELSON, GILWAN Out: HOOVER, SHAWN										
Sub In: MIMS, LARON Out: TAYLOR, DOMINICK										
0-2	00.0%	1-4	25.0%	1	4:39		Foul on RITCHIE, MIKE			
1		2		1	4:37	*7-6	Foul on RITCHIE, MIKE			
TAYLOR, CHARLES, 2 Free Throws missed both										
Sub In: HOOVER, SHAWN Out: TAYLOR, CHARLES										
1-3	33.3%	4-12	33.3%	1	4:15	7-8*	Driving Layup by NEACE, THOMAS Assist by RITCHIE, MIKE			
1-3	33.3%	5-15	33.3%	1	3:58		Foul on THOMPSON, BRAN.			
Sub In: TAYLOR, CHARLES Out: IVORY, WILLIE										
4 ft Lane Follow by NELSON, GILWAN										
Follow Rebound by LOCKHART, MIKE										
1		3		1	3:58					
Sub In: IVORY, WILLIE Out: LOCKHART, MIKE										
Foul on HOOVER, SHAWN										
1-4	25.0%	1-6	16.6%	1	3:25					
IVORY, WILLIE, 2 Free Throws missed both										
Sub In: COLLINS, GARY Out: THOMPSON, BRAN.										
1		3		1	3:25					
NEACE, THOMAS, 2 Free Throws made 1st missed 2nd										
Sub In: FELTNER, DAVID Out: RITCHIE, MIKE										
1-4	25.0%	1-6	16.6%	1	3:25					
Foul on FELTNER, DAVID										
1-4	25.0%	1-6	16.6%	1	3:25					
3 ft Lane Turnaround by SUMNER, BILL										
Assist by NEACE, THOMAS										

Player				Team				PLEASURE RIDGE PARK				Time	Score	M.C. NAPIER		Player	Team		
TAYLOR, CHARLES, MIMS, LARON, NELSON, GILWAN, LOCKHART, MIKE, IVORY, WILLIE																			
1-2	50.0%	6-17	35.2%	3 pt 22 ft Right Angle Jump shot by IVORY, WILLIE				2	7:46	11-13*	COLLINS, GARY, SUMNER, BILL, FELTNER, DAVID, HURLEY, JAMES, NEACE, THOMAS		1-1	100%	5-12	41.6%			
				Assist by NELSON, GILWAN				2	7:35	*14-13	Ball to NAVAJOS								
2-5	40.0%	7-20	35.0%	Follow Rebound by NELSON, GILWAN				2	6:59	*16-13	8 ft Lane Jump shot by FELTNER, DAVID								
2-4	50.0%	8-22	36.3%	2 ft Lane Follow by IVORY, WILLIE				2	6:44	*18-13	Sub In: RICE, JON Out: SUMNER, BILL								
				Sub In: TAYLOR, DOMINICK Out: MIMS, LARON				2	6:33		Sub In: RITCHIE, MIKE Out: FELTNER, DAVID								
				REB: 19 A: 3 BLK: 2 TO: 6 PF: 3				2	6:33		REB: 6 A: 3 BLK: 1 TO: 6 PF: 4								
				S: 2 FT: 1-6 16.6% FG: 8-22 36.3%				T I M E - O U T		M.C. NAPIER No. 1		S: 3 FT: 2-4 50.0% FG: 5-13 38.4%							
2-6	33.3%	9-23	39.1%	Layup Off Fast Break by TAYLOR, CHARLES				2	6:14	*20-13									
				Foul on TAYLOR, CHARLES				2	5:51		Foul on COLLINS, GARY		1			5			
3-7	42.8%	10-26	38.4%	Layup Off Fast Break by TAYLOR, CHARLES				2	5:36		COLLINS, GARY, 2 Free Throws made 1st missed 2nd		1-2	50.0%	3-6	50.0%			
				Sub In: MIMS, LARON Out: TAYLOR, CHARLES				2	5:36	20-14*									
				Sub In: HOOVER, SHAWN Out: LOCKHART, MIKE				2	4:16	*22-14									
1-3	33.3%	11-27	40.7%	4 ft Lane Turnaround by HOOVER, SHAWN				2	4:10										
				Sub In: HOOVER, SHAWN Out: LOCKHART, MIKE				2	4:10										
2-4	50.0%	12-31	38.7%	4 ft Lane Follow by HOOVER, SHAWN				2	4:10	*24-14									
				Sub In: TAYLOR, CHARLES Out: TAYLOR, DOMINICK				2	3:42	24-17*	3 pt 23 ft Right Angle Jump shot by COLLINS, GARY		1-2	50.0%	6-15	40.0%			
								2	3:06	*26-17									
2-2	100%	3-8	37.5%	NELSON, GILWAN, 2 Free Throws made both				2	3:03		8 ft Left Side Jump shot by RICE, JON		1-2	50.0%	7-16	43.7%			
				Sub In: LOCKHART, MIKE Out: NELSON, GILWAN				2	2:40	26-19*	Foul on RICE, JON		1			6			
								2	2:29	*28-19									
								2	2:21										
				Sub In: NELSON, GILWAN Out: IVORY, WILLIE				2	2:03	28-22*	3 pt Shot by COLLINS, GARY		2-3	66.6%	8-17	47.0%			
				Shot by TAYLOR, CHARLES				2	1:39		Sub In: FELTNER, DAVID Out: RITCHIE, MIKE								
4-8	50.0%	13-34	38.2%					2	1:39										
								2	1:13	*30-22	Foul on FELTNER, DAVID		2			7			
1-3	33.3%	4-9	44.4%	TAYLOR, CHARLES, 1 Free Throw made				2	1:13	*31-22			3-5	60.0%	9-20	45.0%			
								2	0:59	31-25*	3 pt Shot by COLLINS, GARY								

OFFICIAL NFSHSA BASKETBALL BOX SCORE: \* OFFICIAL FIRST HALF \*  
 Date: 03-16-95 Site: BOY'S SWEET 16, LEXINGTON

VISITORS (Last Name, First)

NO.	M.C. NAPIER	Tot FG		3-POINT		FT	FTA	Rebounds			PF	TP	A	TO	BLK	S	TIME				
		FG	FGA	FG	FGA			OFF	DEF	TOT											
35	THOMPSON, BRAN.	0	2	0	0	0	0	0	0	0	1	0	1	1	0	1	6:46				
41	NEACE, THOMAS	2	3	0	0	1	2	1	2	3	0	5	1	5	0	0	16:00				
45	RITCHIE, MIKE	0	1	0	0	0	0	0	0	0	2	0	1	2	1	1	11:55				
23	SUMNER, BILL	2	4	1	2	0	0	0	1	1	0	5	0	0	0	0	9:27				
25	HURLEY, JAMES	0	2	0	1	1	2	0	3	3	0	1	0	2	0	1	16:00				
13	COLLINS, GARY	3	5	3	5	1	2	0	1	1	1	10	0	1	0	0	9:14				
53	FELTNER, DAVID	1	1	0	0	0	0	0	0	0	2	2	0	0	0	0	4:05				
33	RICE, JON	1	2	0	0	0	0	0	1	1	1	2	0	1	0	1	6:33				
TEAM REBOUNDS (INCLUDED IN TOTALS)																					
TOTALS		9	20	4	8	3	6	1	8	9	7	25	3	12	1	4	80				
Percentages:		HALF		FG		9/20		45.0%		3-PT.		4/8		50.0%		FT		3/6		50.0%	
		Period 1				4/11		36.4%				1/4		25.0%				2/4		50.0%	
		Period 2				4/8		50.0%				2/3		66.7%				1/2		50.0%	

HOME (Last Name, First)

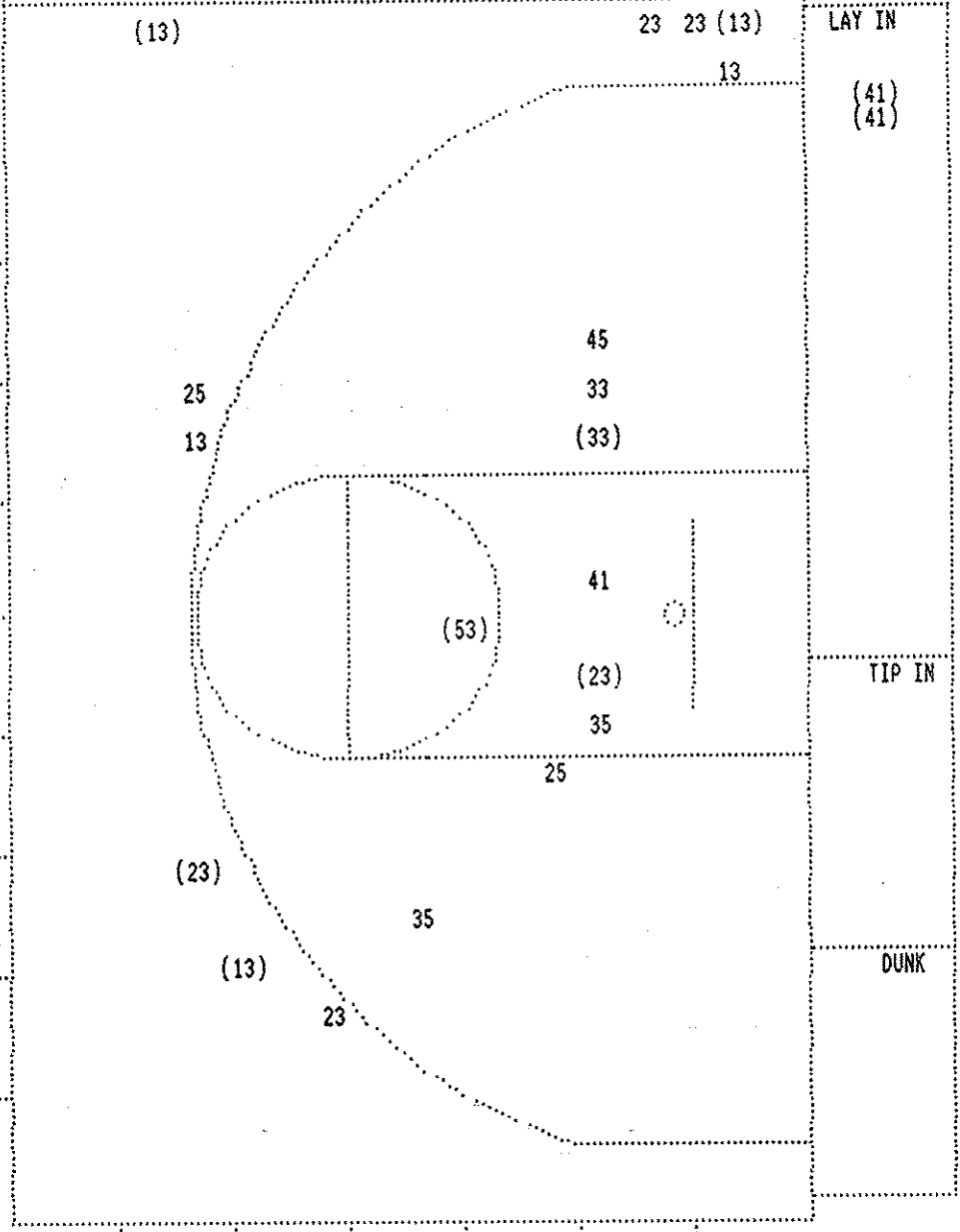
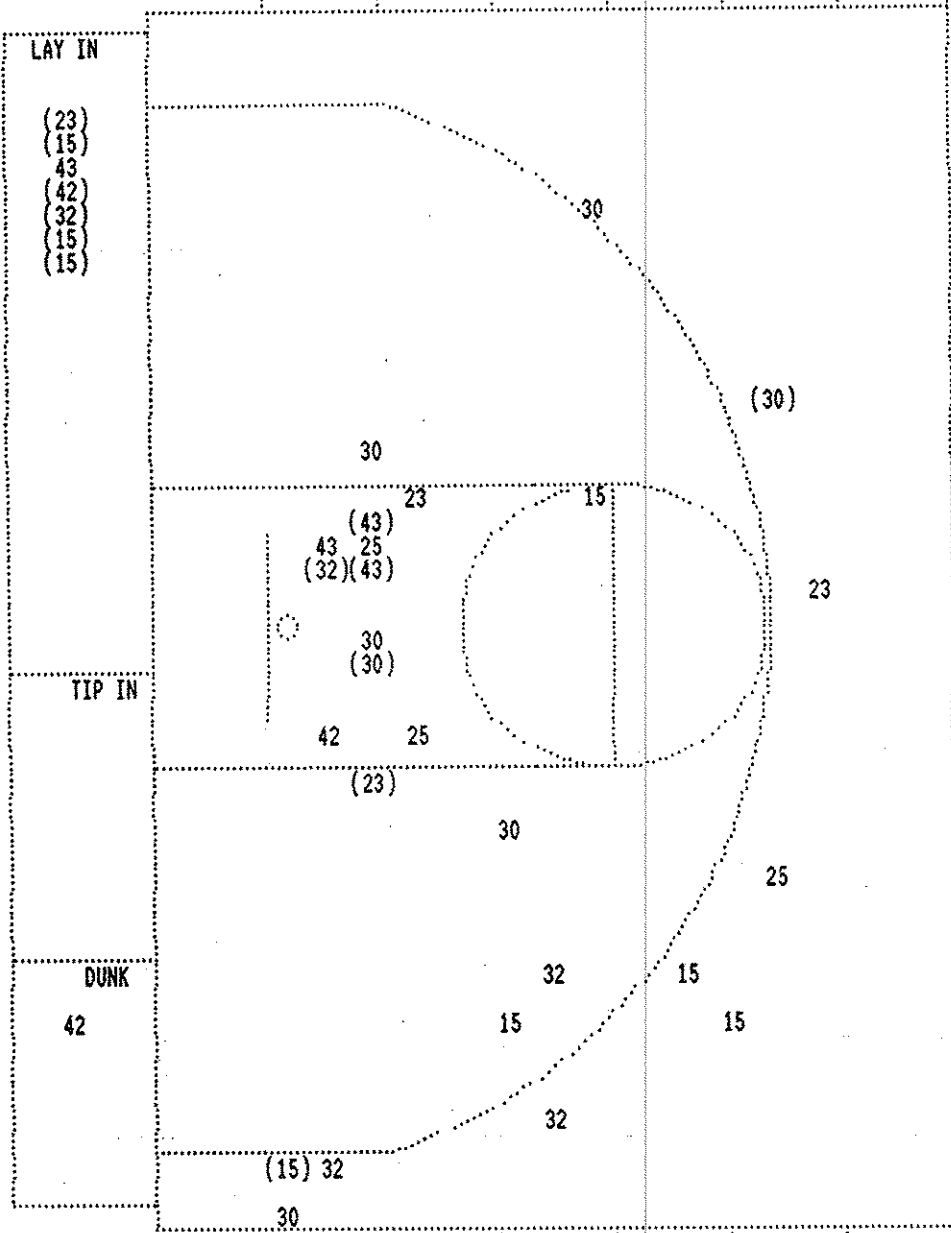
NO.	PLEASURE RIDGE PARK	Tot FG		3-POINT		FT	FTA	Rebounds			PF	TP	A	TO	BLK	S	TIME				
		FG	FGA	FG	FGA			OFF	DEF	TOT											
32	NELSON, GILWAN	2	5	0	2	2	2	2	2	4	0	6	3	2	0	0	13:29				
43	HOOVER, SHAWN	2	4	0	0	0	0	3	1	4	1	4	0	0	0	0	11:11				
42	LOCKHART, MIKE	1	3	0	0	0	0	2	4	6	0	2	0	1	2	0	12:57				
15	TAYLOR, CHARLES	4	8	0	2	1	3	2	0	2	2	9	0	4	0	2	14:39				
23	TAYLOR, DOMINICK	2	4	0	1	0	0	2	1	3	0	4	0	1	0	1	7:32				
30	IVORY, WILLIE	2	7	1	2	1	4	3	1	4	0	6	0	2	0	2	10:37				
25	MIMS, LARON	0	3	0	1	0	0	0	0	0	1	0	0	0	0	0	9:35				
TEAM REBOUNDS (INCLUDED IN TOTALS)																					
TOTALS		13	34	1	8	4	9	15	12	27	5	31	3	10	2	5	80				
Percentages:		HALF		FG		13/34		38.2%		3-PT.		1/8		12.5%		FT		4/9		44.4%	
		Period 1				5/16		31.3%				0/4		0.0%				1/6		16.7%	
		Period 2				8/18		44.4%				1/4		25.0%				3/3		100.0%	

OFFICIALS: Glenn Brown, Keith Hall, Anthony Gray-A.  
 Technicals: None

SCORE BY PERIODS

M.C. NAPIER	11	11	=	25
PLEASURE RIDGE PARK	11	20	=	31

Attendance:  
 COMMENTS: POINTS OFF TURNOVERS SECOND CHANCE POINTS  
 M.C. NAPIER 1 PLEASURE RIDGE PARK 14 M.C. NAPIER 2 PLEASURE RIDGE PARK 11  
 Produced by the KHSAA SWEET 16 Stat Crew with FINAL III - a Product of Stone Consulting (606)273-3941™



PLEASURE RIDGE PARK					
Player		Player		Player	
32 - NELSON, GI	2 / 5	40.0%	25 - MIMS, LaRO	0 / 3	0.0%
43 - HOOVER, SH	2 / 4	50.0%	30 - IVORY, WIL	2 / 7	28.5%
42 - LOCKHART,	1 / 3	33.3%			
15 - TAYLOR, CH	4 / 8	50.0%			
23 - TAYLOR, DOM	2 / 4	50.0%			
Layups	1-9 Ft	10-15 Ft	Over 15 Ft	3 Pointers	Total
7 / 10	5 / 12	0 / 2	0 / 2	1 / 8	13 / 34
70.0%	41.7%	0.0%	0.0%	12.5%	38.2%

M.C. NAPIER					
Player		Player		Player	
35 - THOMPSON,	0 / 2	0.0%	13 - COLLINS, G	3 / 5	60.0%
41 - NEACE, THO	2 / 3	66.6%	33 - RICE, JON	1 / 2	50.0%
45 - RITCHIE, M	0 / 1	0.0%	53 - FELTNER, D	1 / 1	100.0%
23 - SUNNER, BI	2 / 5	40.0%			
25 - HURLEY, JA	0 / 2	0.0%			
Layups	1-9 Ft	10-15 Ft	Over 15 Ft	3 Pointers	Total
4 / 7	3 / 6	0 / 2	0 / 1	2 / 5	9 / 21
57.1%	50.0%	0.0%	0.0%	40.0%	42.9%

Sub In: NELSON, GILWAN Out: IVORY, WILLIE

Sub In: FELTNER, DAVID Out: RITCHIE, MIKE

M.C. NAPIER "NAVAJOS" vs PLEASURE RIDGE PARK "PANTHERS"  
2nd Half Play by Play

PAGE : 1

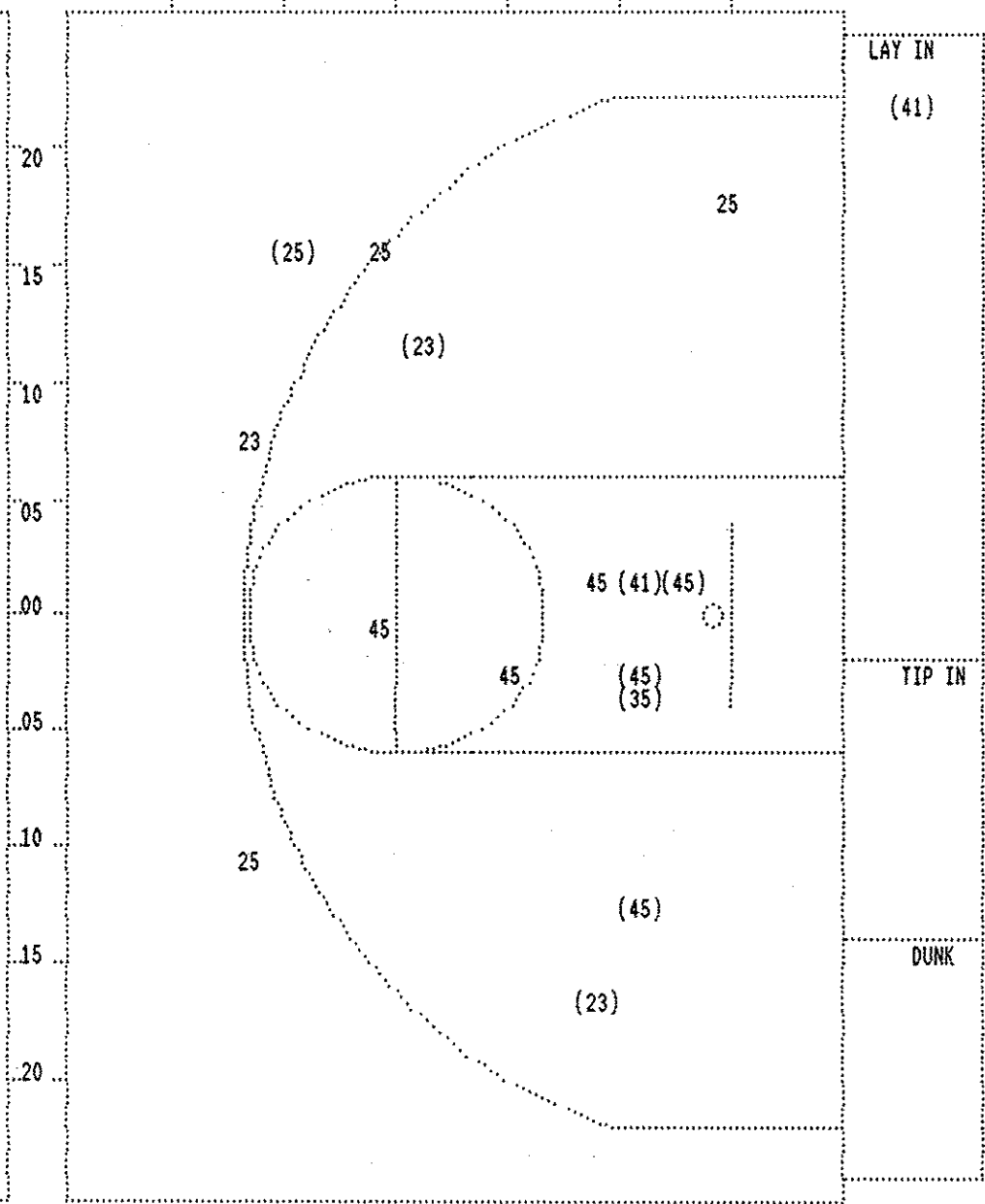
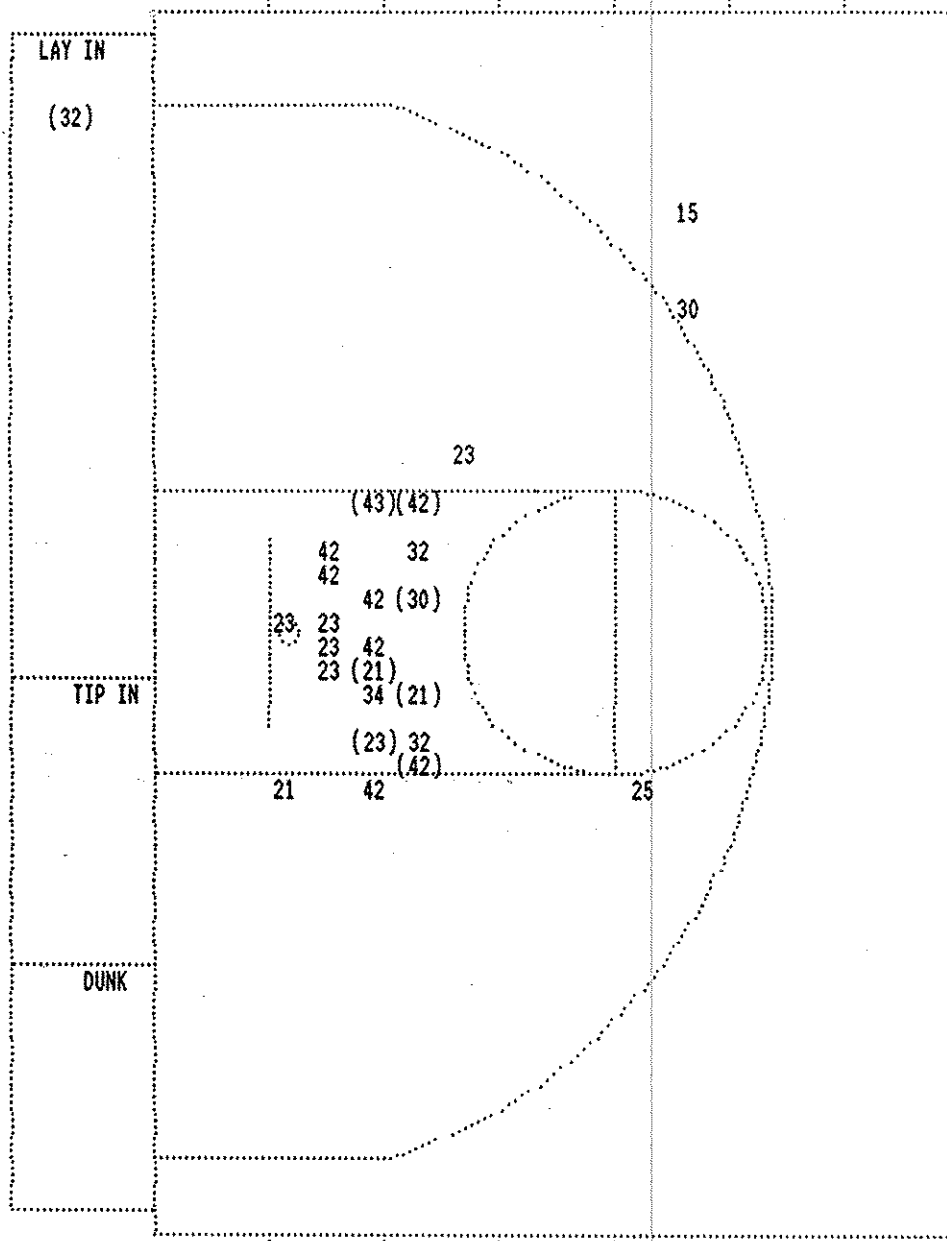
Tip off at 1:00 P.M. on 03/16/95 at BOY'S SWEET 16, LEXINGTON  
Produced by the KHSAA SWEET 16 Stat Crew with FINAL III  
Final III is a product of STONE CONSULTING SERVICE (606)273-3941

Player	Team	PLEASURE RIDGE PARK	Time	Score	M.C. NAPIER	Player	Team
NELSON, GILWAN	HOOVER, SHAWN	LOCKHART, MIKE	TAYLOR, CHARLES	TAYLOR, DOMINICK		THOMPSON, BRAN.	NEACE, THOMAS
							RITCHIE, MIKE
							SUMNER, BILL
							HURLEY, JAMES
2-4	50.0%	14-35	40.0%	7 ft Lane Jump shot by LOCKHART, MIKE	3	7:47	*33-25
1		4		Assist by TAYLOR, CHARLES	3	7:27	*35-25
3-5	60.0%	15-36	41.6%	4 ft Lane Jump shot by TAYLOR, DOMINICK	3	7:13	35-27*
1		1		Foul on TAYLOR, DOMINICK	3	6:57	17 ft Left Angle Jump shot by SUMNER, BILL
0-2	00.0%	4-11	36.3%	LOCKHART, MIKE, 2 Free Throws missed both	3	6:47	Foul on NEACE, THOMAS
2-5	40.0%	5-13	38.4%	TAYLOR, CHARLES, 2 Free Throws made 1st missed 2nd	3	6:47	Foul on NEACE, THOMAS
0-2	00.0%	5-15	33.3%	TAYLOR, DOMINICK, 2 Free Throws missed both	3	6:33	*36-27
3		2		Foul on TAYLOR, CHARLES	3	5:52	36-29*
				Sub In: IVORY, WILLIE Out: TAYLOR, DOMINICK	3	5:28	16 ft Right Side Jump shot by SUMNER, BILL
				Sub In: MIMS, LARON Out: HOOVER, SHAWN	3	5:28	Foul on THOMPSON, BRAN.
				Sub In: PARIS, SHAWN Out: LOCKHART, MIKE	3	5:25	
				REB: 32 A: 4 BLK: 3 TO: 10 PF: 2	3	5:25	36-31*
				S: 8 FT: 5-15 33.3% FG: 15-42 35.7%	3	5:25	Driving Layup by NEACE, THOMAS
				T I M E - O U T	3	5:25	Foul on HURLEY, JAMES
				M.C. NAPIER No. 1	3	3:51	
				REB: 16 A: 3 BLK: 1 TO: 15 PF: 4	3	3:51	
				S: 4 FT: 3-6 50.0% FG: 12-26 46.1%	3	3:51	
2-6	33.3%	6-17	35.2%	IVORY, WILLIE, 2 Free Throws made 1st missed 2nd	3	3:51	*37-31
1		3		Foul on PARIS, SHAWN	3	3:42	
3-8	37.5%	16-44	36.3%	4 ft Lane Jump shot by IVORY, WILLIE	3	3:41	*39-31
2		5		Assist by TAYLOR, CHARLES	3	3:38	
1		4		Foul on IVORY, WILLIE	3	3:38	
				Sub In: LOCKHART, MIKE Out: PARIS, SHAWN	3	2:59	39-33*
2		5		Foul on IVORY, WILLIE	3	2:59	2 ft Lane Follow by RITCHIE, MIKE
3		6		Foul on IVORY, WILLIE	3	2:59	39-34*
				Sub In: TAYLOR, DOMINICK Out: IVORY, WILLIE	3	2:34	RITCHIE, MIKE, 1 Free Throw made
4		7		Foul on TAYLOR, CHARLES	3	2:34	39-37*
				Sub In: IVORY, WILLIE Out: TAYLOR, CHARLES	3	2:34	3 pt 24 ft Left Angle Jump shot by HURLEY, JAMES
1		8		Foul on NELSON, GILWAN	3	1:54	
				Sub In: HOOVER, SHAWN Out: TAYLOR, DOMINICK	3	1:54	THOMPSON, BRAN., 1 Free Throw missed
				Foul on NELSON, GILWAN	3	1:38	Sub In: COLLINS, GARY Out: THOMPSON, BRAN.
0-3	00.0%	6-18	33.3%	LOCKHART, MIKE, 1 Free Throw missed	3	1:38	
0-4	00.0%	6-19	31.5%	LOCKHART, MIKE, 1 Free Throw missed	3	1:21	39-39*
4		9		Foul on IVORY, WILLIE	3	1:21	RITCHIE, MIKE, 1 & Bonus made both
				Sub In: FEY, BRANDON Out: IVORY, WILLIE	3	1:21	Sub In: WELLS, ROY Out: HURLEY, JAMES
				Player Control Foul on FEY, BRANDON	3	1:05	Foul on NEACE, THOMAS
					3	1:05	
					3	1:05	Sub In: RICE, JON Out: NEACE, THOMAS
					3	1:04	
					3	1:04	
					3	1:04	RITCHIE, MIKE, 1 & Bonus missed 1st
					3	1:03	Foul on WELLS, ROY
					3	1:03	
					3	0:05	

Player	Team	PLEASURE RIDGE PARK	Time	Score	M.C. NAPIER	Player	Team
MIMS, LaRON, NELSON, GILWAN, HOOVER, SHAWN, LOCKHART, MIKE, FEY, BRANDON						HURLEY, JAMES, RITCHIE, MIKE, RICE, JON, COLLINS, GARY, NEACE, THOMAS	
						Ball to NAVAJOS	
			4 7:54	39-41*		12 ft Right Side Jump shot by RITCHIE, MIKE	2-4 50.0% 15-30 50.0%
3-10 30.0% 17-51 33.3%		6 ft Lane Jump shot by LOCKHART, MIKE	4 7:42	*41-41			
			4 6:26			Foul on RICE, JON	2 7
4-4 100% 8-21 38.0%		NELSON, GILWAN, 2 Free Throws made both	4 6:26	*43-41			
		Sub In: TAYLOR, CHARLES Out: NELSON, GILWAN	4 6:26				
3-5 60.0% 18-52 34.6%		6 ft Lane Jump shot by HOOVER, SHAWN	4 6:06	*45-41			
1 6		Assist by MIMS, LaRON					
			4 5:57				
		REB: 39 A: 6 BLK: 3 TO: 13 PF: 10				REB: 20 A: 3 BLK: 2 TO: 20 PF: 7	
		S: 10 FT: 8-21 38.0% FG: 18-52 34.6%			T I M E - O U T N.C. NAPIER No. 2	S: 4 FT: 6-11 54.5% FG: 15-30 50.0%	
2 11		Foul on HOOVER, SHAWN	4 5:44				
			4 5:44	45-42*		NEACE, THOMAS, 2 Free Throws missed 1st made 2nd	2-4 50.0% 7-13 53.8%
		Sub In: NELSON, GILWAN Out: TAYLOR, CHARLES	4 5:44				
1-1 100% 19-53 35.8%		2 ft Lane Jump shot by FEY, BRANDON	4 5:35	*47-42			
		Sub In: TAYLOR, CHARLES Out: HOOVER, SHAWN	4 5:09				
			4 3:40			Foul on RITCHIE, MIKE	3 8
		Sub In: HOOVER, SHAWN Out: LOCKHART, MIKE	4 3:40				
0-1 00.0% 8-22 36.3%		MIMS, LaRON, 1 & Bonus missed 1st	4 3:30				
		REB: 42 A: 6 BLK: 3 TO: 13 PF: 11				REB: 20 A: 3 BLK: 3 TO: 20 PF: 8	
		S: 10 FT: 8-22 36.3% FG: 19-54 35.1%			No. 1 PLEASURE RIDGE PARK T I M E - O U T	S: 4 FT: 7-13 53.8% FG: 15-31 48.3%	
			4 3:21			Foul on NEACE, THOMAS	4 9
			4 3:10	47-44*		3 ft Lane Jump shot by RITCHIE, MIKE	3-5 60.0% 16-32 50.0%
						Assist by COLLINS, GARY	1 4
5 12		Foul on TAYLOR, CHARLES	4 2:41				
		Sub In: IVORY, WILLIE Out: TAYLOR, CHARLES	4 2:40				
			4 2:40	47-46*		RICE, JON, 1 & Bonus made both	2-2 100% 9-15 60.0%
2 13		Foul on FEY, BRANDON	4 2:26				
			4 2:26				
		REB: 42 A: 6 BLK: 3 TO: 15 PF: 13				REB: 21 A: 4 BLK: 3 TO: 20 PF: 9	
		S: 10 FT: 8-22 36.3% FG: 19-55 34.5%			No. 2 PLEASURE RIDGE PARK T I M E - O U T	S: 5 FT: 9-15 60.0% FG: 16-32 50.0%	
			4 2:26	47-47*		HURLEY, JAMES, 1 & Bonus made 1st missed 2nd	2-4 50.0% 10-17 58.8%
		Sub In: TAYLOR, DOMINICK Out: MIMS, LaRON	4 2:26				
3-8 37.5% 20-56 35.7%		Driving Layup by NELSON, GILWAN	4 2:11	*49-47			
			4 1:47			Foul on RITCHIE, MIKE	4 10
2-4 50.0% 10-24 41.6%		TAYLOR, DOMINICK, 1 & Bonus made both	4 1:47	*51-47			
			4 1:28	51-49*		3 ft Lane Driving by NEACE, THOMAS	4-5 80.0% 17-33 51.5%
						Assist by RICE, JON	1 5
			4 1:19			Foul on NEACE, THOMAS	5 11
		Sub In: LOCKHART, MIKE Out: HOOVER, SHAWN	4 1:19				
			4 1:19			Sub In: THOMPSON, BRAN. Out: NEACE, THOMAS	
5-6 83.3% 11-26 42.3%		NELSON, GILWAN, 2 Free Throws made 1st missed 2nd	4 1:19	*52-49			
			4 1:12	52-51*		3 ft Lane Turnaround by THOMPSON, BRAN.	1-3 33.3% 18-34 52.9%
			4 1:04			Foul on HURLEY, JAMES	2 12
7-8 87.5% 13-28 46.4%		NELSON, GILWAN, 1 & Bonus made both	4 1:04	*54-51			
1 14		Foul on LOCKHART, MIKE	4 0:57				
		Sub In: HOOVER, SHAWN Out: LOCKHART, MIKE	4 0:57				
			4 0:57	54-53*		RITCHIE, MIKE, 2 Free Throws made both	5-6 83.3% 12-19 63.1%
			4 0:53			Foul on HURLEY, JAMES	3 13
		Sub In: LOCKHART, MIKE Out: HOOVER, SHAWN	4 0:53				
2-5 40.0% 13-29 44.8%		TAYLOR, DOMINICK, 1 & Bonus missed 1st	4 0:52				
5 15		Foul on IVORY, WILLIE	4 0:52				



Player	Team	PLEASURE RIDGE PARK	Time	Score	N.C. NAPIER	Player	Team
		Sub In: MIMS, LaRON Out: IVORY, WILLIE	4	0:52			
		REB: 43 A: 6 BLK: 3 TO: 16 PF: 15 S: 12 FT: 13-29 44.8% FG: 20-56 35.7%	4	0:52	No. 3 PLEASURE RIDGE PARK T I M E - O U T	REB: 23 A: 5 BLK: 3 TO: 22 PF: 13 S: 6 FT: 12-19 63.1% FG: 18-34 52.9%	
2-3	66.6%	21-57 36.8%	4	0:52	54-55* RITCHIE, MIKE, 1 & Bonus made both	7-8	87.5% 14-21 66.6%
		4 ft Lane Driving by FEY, BRANDON	4	0:39	*56-55		
		REB: 43 A: 6 BLK: 3 TO: 16 PF: 15 S: 12 FT: 13-29 44.8% FG: 21-57 36.8%	4	0:17	T I M E - O U T N.C. NAPIER No. 3	REB: 23 A: 5 BLK: 3 TO: 22 PF: 13 S: 6 FT: 14-21 66.6% FG: 18-34 52.9%	
4-7	57.1%	15-31 48.3%	4	0:01	Foul on HURLEY, JAMES	4	14
		TAYLOR, DOMINICK, 1 & Bonus made both	4	0:01	*58-55		



PLEASURE RIDGE PARK

Player	Player	Player	Player
32 - NELSON, GI 1 / 3 33.3%	21 - FEY, BRAND 2 / 3 66.6%	43 - HOOVER, SH 1 / 1 100.0%	25 - MINS, LaRO 0 / 1 0.0%
42 - LOCKHART, 2 / 7 28.5%	30 - IVORY, WIL 1 / 2 50.0%	15 - TAYLOR, CH 0 / 1 0.0%	34 - PARIS, SHA 0 / 1 0.0%
23 - TAYLOR, DOM 1 / 6 16.6%			
Layups 1-9 Ft 10-15 Ft Over 15 Ft 3 Pointers Total			
1 / 1 7 / 20 0 / 2 0 / 2 8 / 25			
100.0% 35.0% 0.0% 0.0% 32.0%			

M.C. NAPIER

Player	Player	Player	Player
35 - THOMPSON, 1 / 1 100.0%	41 - NEACE, THO 2 / 2 100.0%	45 - RITCHIE, M 3 / 6 50.0%	23 - SUMNER, BI 2 / 3 66.6%
25 - HURLEY, JA 1 / 4 25.0%			
Layups 1-9 Ft 10-15 Ft Over 15 Ft 3 Pointers Total			
1 / 1 4 / 6 1 / 2 2 / 2 1 / 5 9 / 16			
100.0% 66.7% 50.0% 100.0% 20.0% 56.3%			